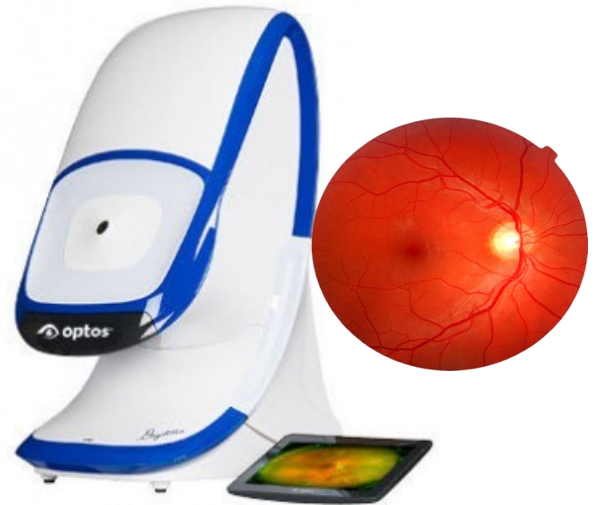


During your examination, the doctor carefully evaluates your vision and examines the internal (retina) structures of your eyes. The retina is susceptible to a variety of diseases and conditions that may lead to **sight threatening** impairment. As our new standard of care, advanced technology is used to provide a better understanding of your eye health.



Digital Retinal Imaging utilizes high definition photography to document the retinal health.

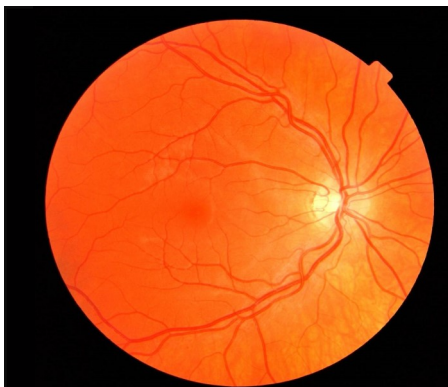
- This instrument quickly scans the retina to create a permanent digital record. It allows the doctor to detect, monitor and compare progression of eye disease.

Digital Retinal Imaging is:

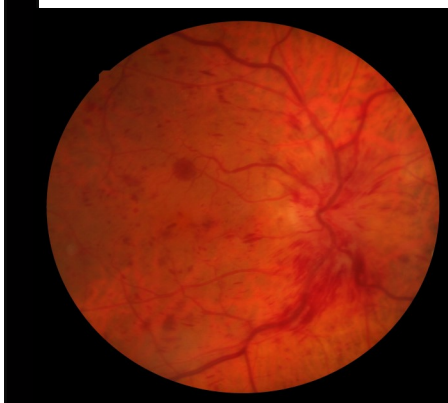
- a non-invasive technique that allows for early diagnosis of disease that can advance without symptoms or warning.
- essential for patients with a history of diabetes, high blood pressure and other diseases, such as headaches or a strong eyeglass prescription.
- the standard for early detection of glaucoma and macular degeneration.
- strongly recommended by our doctors for all patients.

Unfortunately, vision insurance plans do not pay for advanced diagnostic screening of the retina. You can elect to have this affordable procedure to protect your eye health today.

- I **understand** the vital importance of this test and accept responsibility for the additional payment of **\$19.00** today.
- I **decline** the Digital Retinal Exam Screening against medical advice.



Normal Retina



Diabetic Retinopathy



Wet Macular Degeneration