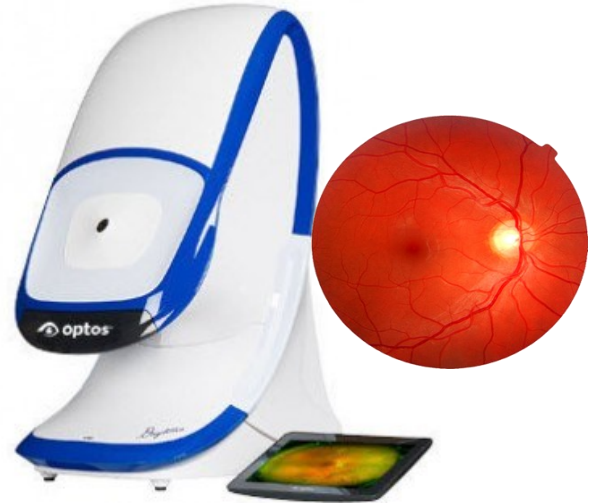


During your examination, the doctor carefully evaluates your vision and examines the internal (retina) structures of your eyes. The retina is susceptible to a variety of diseases and conditions that may lead to [sight threatening](#) impairment. As our new standard of care, advanced technology is used to provide a better understanding of your eye health.



Digital Retinal Imaging utilizes high definition photography to document the retinal health.

- This instrument quickly scans the retina to create a permanent digital record. It allows the doctor to detect, monitor and compare progression of eye disease.

Digital Retinal Imaging is:

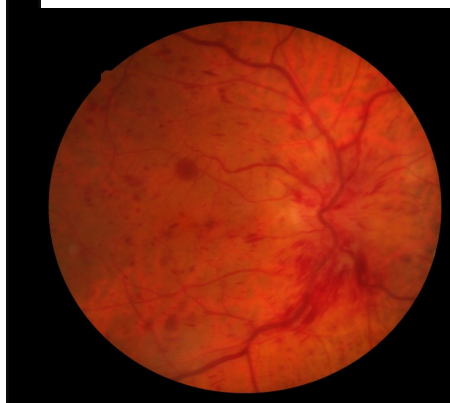
- a non-invasive technique that allows for early diagnosis of disease that can advance without symptoms or warning.
- essential for patients with a history of diabetes, high blood pressure and other diseases, such as headaches or a strong eyeglass prescription.
- the standard for early detection of glaucoma and macular degeneration.
- strongly recommended by our doctors for all patients for a \$25.00 additional fee.

Unfortunately, vision insurance plans do not pay for advanced diagnostic screening of the retina. You can elect to have this affordable procedure to protect your eye health today.

- I **understand** the vital importance of this test and accept responsibility for the additional payment of \$19.00 today.
- I **decline** the Digital Retinal Exam Screening against medical advice.



Normal Retina



Diabetic Retinopathy



Wet Macular Degeneration